

KANAKIA

Wall Street

Andheri (E)



KANAKIA

PERFECTION ALL THE WAY





Length measures in kilometres. Impact measured in trillions.

It measures a mere 1.1 km in length. The impact, however spans the globe. Located in the financial district of lower Manhattan, New York, Wall Street has influence beyond its physical location. It would not be an exaggeration to say that the world takes a cue from here. Companies are benchmarked on how Wall Street perceives them. Corporate reputations are made or broken on their performance on Wall Street. Several major exchanges have or had headquarters in the Wall Street area including the New York Mercantile Exchange, the New York Board of Trade and the former American Stock Exchange.

It's not a commercial center, it's the center of the world.



From humble origins come exponential growth.

The Dutch birthed "Waal Straat" derived its name from being the earthen wall of the northern boundary of the New Amsterdam settlement. Other conflicting versions also exist. However even today, some English maps show the name as Waal Straat. Its architecture derives its inspiration from the Golden age though some art deco influences are visible in the neighbourhood. Its small street and narrow passages are at sharp contrast to the glorious growth of the very world it houses.

“Wall Street is the only place that people ride to in a Rolls Royce to get advice from those who take the subway.”

- Warren Buffett



“Wall street people are in fact very smart; they’re funny, they’re not company men who work their way up the chain.”

- Paul Krugman



World economies to world movies. Wall Street has inspired the entire spectrum.

Art, they say, is inspired by life. Sometimes, as in this rare instance, it can launch careers. It can make corporations. It can also become the bedrock for movies. The most famous of them all is the movie "Wall Street" made equally famous by the lead actor, Micheal Douglas and more recently, "The Wolf of Wall Street".

Wall Street is also perhaps the institution most quoted. In films, in boardrooms and in life.

“Greed, for lack of a better word, is good. Greed is right. Greed works. Greed clarifies and cuts through to the essence of the evolutionary spirit.”

- Michael Douglas in the movie Wall Street





The Wall Street Walk of Fame.

Wall Street is dotted with iconic corporate buildings but none as famous as The Bull. The other landmarks that give Wall Street its unique character are the New York Stock Exchange and NASDAQ, The Deutsche Building, The JP Morgan Headquarters and Barclays Bank.

The Charging Bull, which is sometimes referred to as the Wall Street Bull or the Bowling Green Bull, is a symbol of aggressive financial optimism and prosperity, leaning back on its haunches and with its head lowered as if ready to charge. It suggests the energy, strength, and unpredictability of the stock market.



What happens on Wall Street doesn't stay on Wall Street.

Coffee on the go. Bvlgaris to tell the time. The Porsches to ferry them around. The docked yachts in Monaco to celebrate their successes. The fancy condos in downtown Manhattan to spend their nights. Some of the more visible symbols that Wall Street is likely to be associated with.

There's also the rigorous side.

The Ivy league education. The 24x7 on tap life. The decisions that make or mar corporations. The movements that can bring cheers across the globe.

Wall Street makes fortunes. Wall Street makes reputations. Wall Street also makes an impact.



KANAKIA

Wall Street

Andheri (E)

Wall Street, Mumbai. An idea whose time has arrived.

Influence. Fame. Success. Lifestyle. Welcome to the new Wall Street.

What's changed. India is the only game in town.

What hasn't changed. Mumbai is India's commercial capital.

What's changed. India is inextricably linked to world markets.

What hasn't changed. Mumbai continues to lead the charge.

What's changed. India demands a global work space.

What hasn't changed. Mumbai will pioneer such a space.

What's changed. Wall Street, Mumbai, is all set to become India's epicentre of business.

What hasn't changed, the Kanakia Group continues to create iconic landmarks in Mumbai.



*Where business
never sleeps*



It's not an office space. It's an opportunity space.

Perfect location. New-age amenities. Smart infrastructure. And the dependable Kanakia name. Kanakia Wall Street has everything an ideal investment has. The metro line has given a welcome respite from the traffic woes, making Andheri (E) one of the comfortable places to commute. Considering the fact that Andheri (E) is poised to be the next big business hub and the dearth of new-age offices, the future of Kanakia Wall Street is indeed promising.

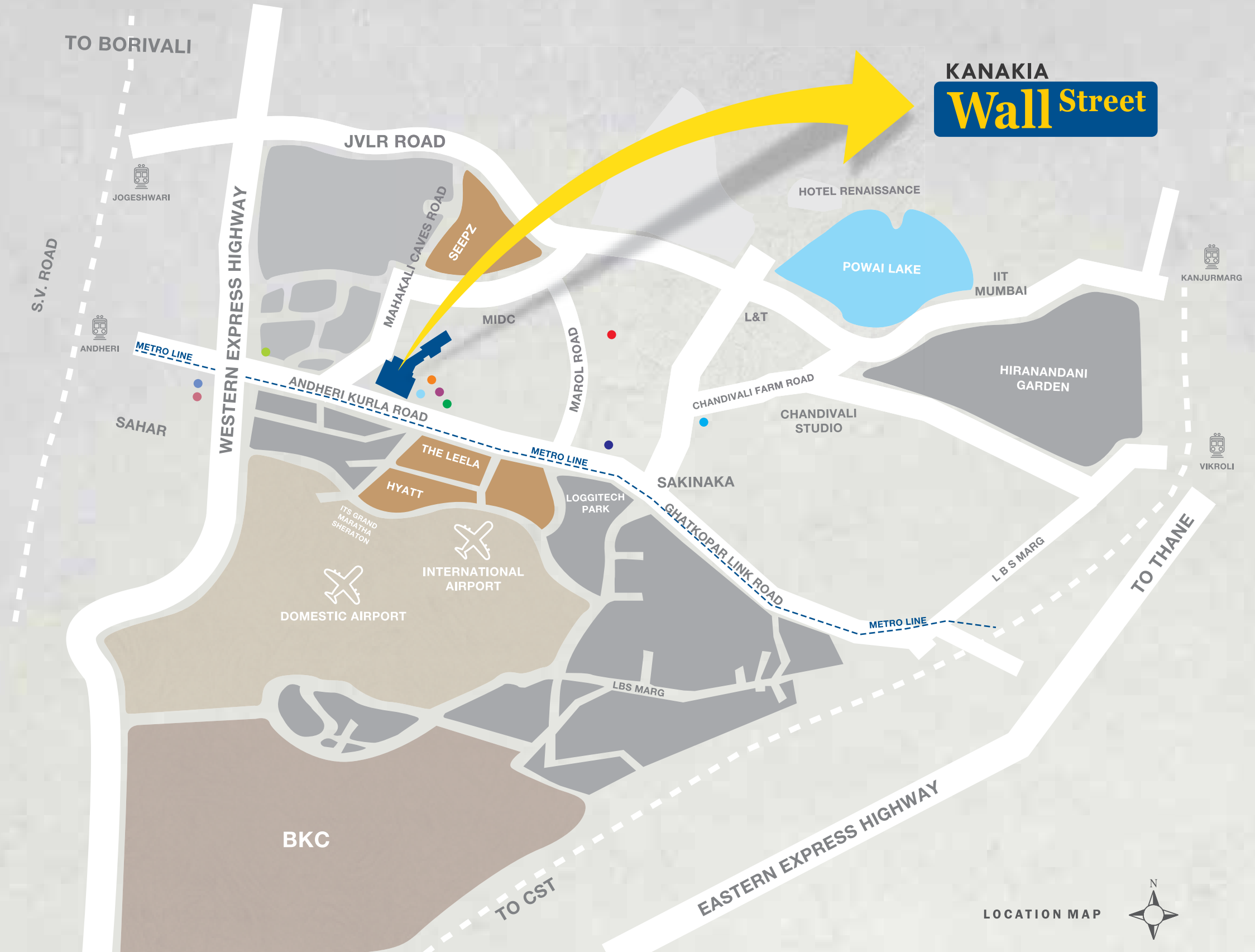
- **Andheri accounts for 34% commercial building market share in Mumbai**
- **It is the biggest commercial micro-market in India**
- **Prominent Industries - Pharma, FMCG, IT, logistics & BFSI**
- **Most of the Top MNC's (HUL, P&G, etc.) are Headquartered in Andheri (E)**
- **Andheri (E) is well connected to various parts of Mumbai via road and rail**
- **8 out of 13 stations on the Versova-Ghatkopar Metro line fall in Andheri (E)**
- **Both the domestic and international airports are in close proximity**

Andheri has a new attitude. Kanakia Wall Street.

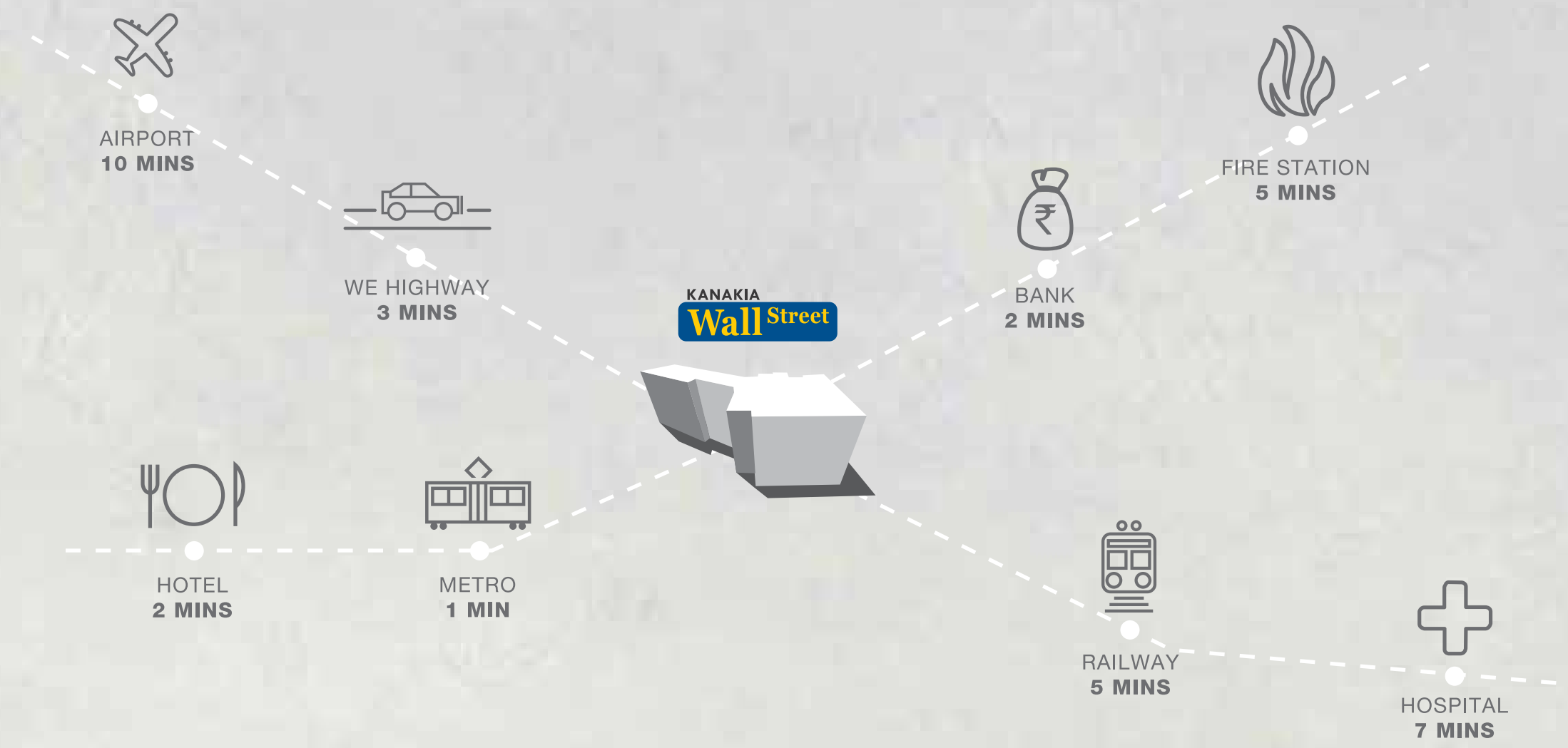
Andheri has become a power centre, with many companies setting up base here. The comfortable access from western and central parts of Mumbai and the close proximity from the airport and residential zones make Andheri East, a natural base for business. Kanakia Wall Street is located in the best part of Andheri, giving you an advantage within an advantage.

Project highlights:

- **Approx. 10,00,000 sq.ft. of commercial space**
- **Office spaces ranging from 800 sq. ft. to 50,000 sq. ft.**
- **Multi-level car parks**
- **Single glazed façade & window**
- **Floor to floor height: 11 feet approx**

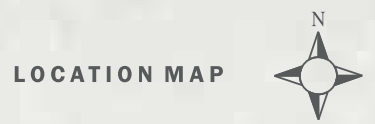


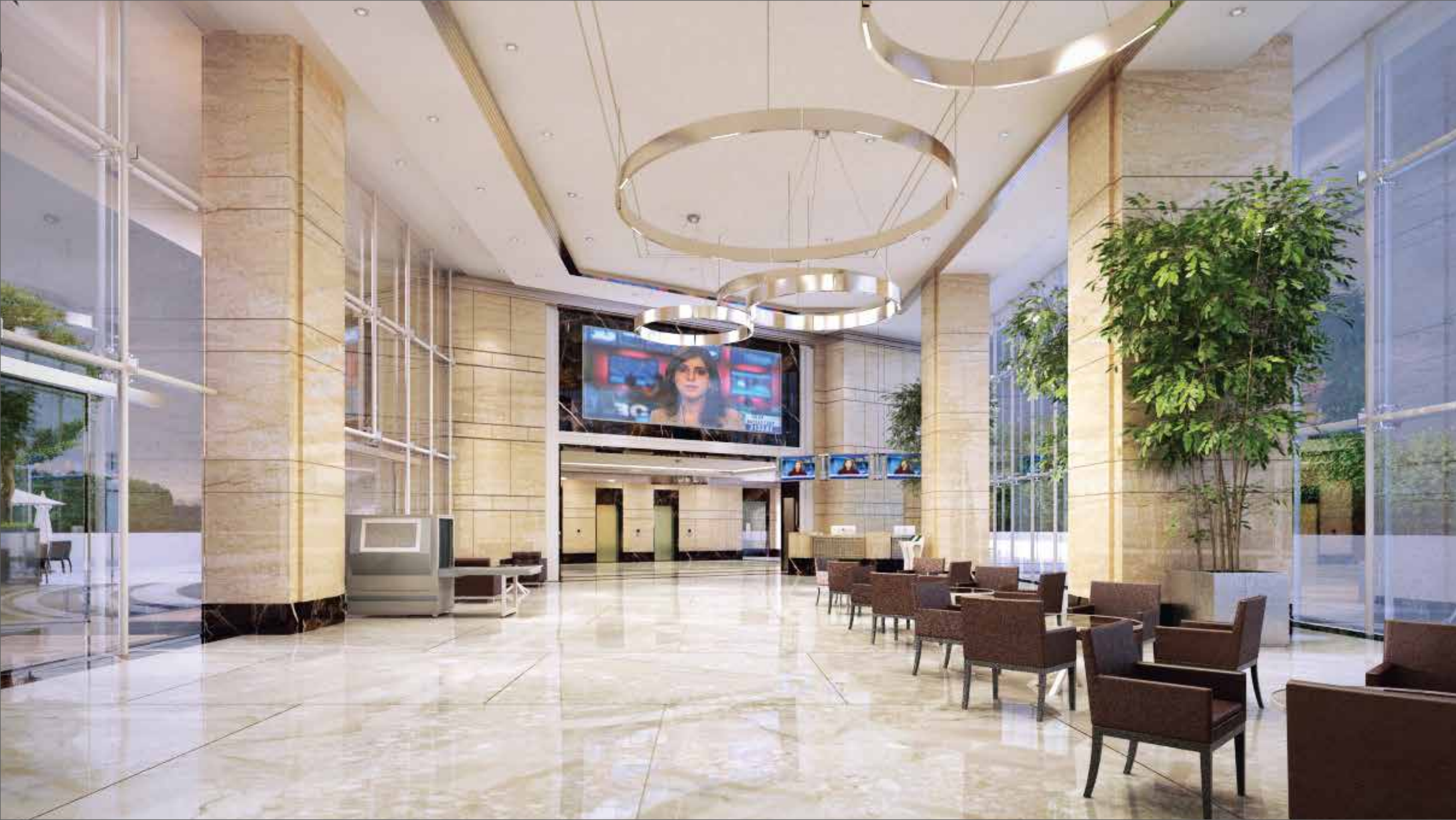
Connectivity



Our footprints in Andheri

- 351 ICON
- BOOMERANG
- ATRIUM 2
- HOTEL COURTYARD BY MARRIOTT
- 215 ATRIUM
- DYNASTY
- SEVENS
- 349 BUSINESS POINT
- EAGLES FLIGHT
- Rainforest





News. Opportunities. Coffees. On call.

The lobby is designed with one objective – to make an impression on your clients and employees. If you have a global business, you need to be aware of what's happening all around the world. Therefore the lobby will have screens displaying news from across the globe, real time updates is after all the need of the hour.

- Executive Lounge
- News Room
- Concierge
- Valet Services
- Cafeteria
- Wi-Fi for Lobby



Outdoor café, landscaped gardens, yoga floor. Because sometimes not doing business can be the best thing for business.

Get out of the office. Breathe. Get inspired. The outdoor café is the perfect place to do it in. Or there's always the yoga floor if you'd like a little flexibility in thinking. Or perhaps, the landscaped gardens could help you focus your thoughts. It's all there. Just around the corner. Take a walk.

- Indoor Games
- ATMs
- Library
- Vending Machines



Power naps. Afternoon walks. Work outs. Success is demanding.

Today we work in a competitive environment, and sometimes we need to put in late nights or all-nighters. Therefore creating a space that meets such work scenarios is the need of the hour. At Kanakia Wall Street, the amenities are chosen keeping in mind the modern-age entrepreneur and employee to ensure comfort in uncomfortable hours.

- Car Wash Area
- Driver Room and Toilets
- Integrated monitoring system
- Surveillance in car parks and common areas
- Designed for Seismic Zone 4
- Duress alarm in highly sensitive areas

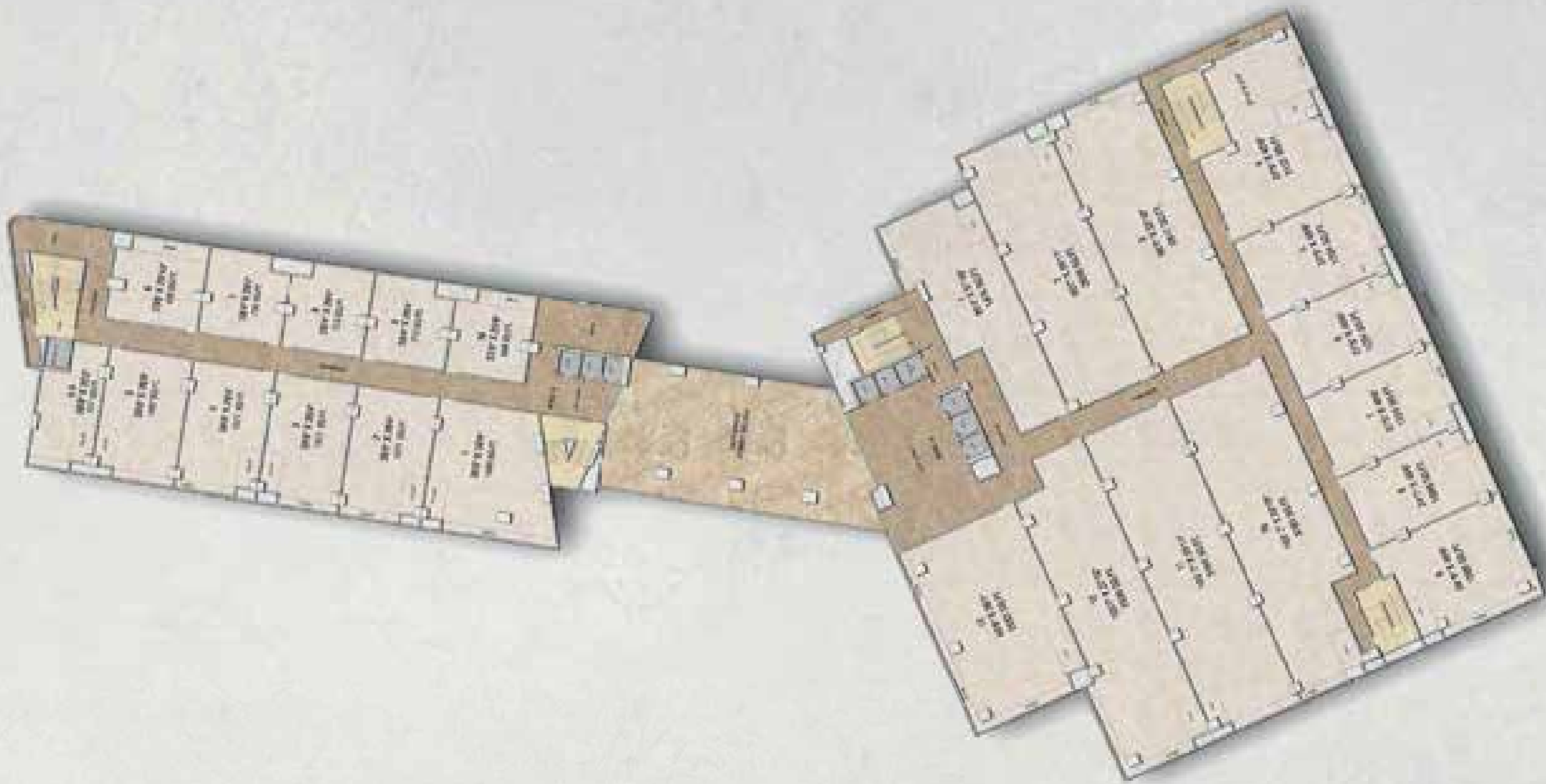
Layout Plan



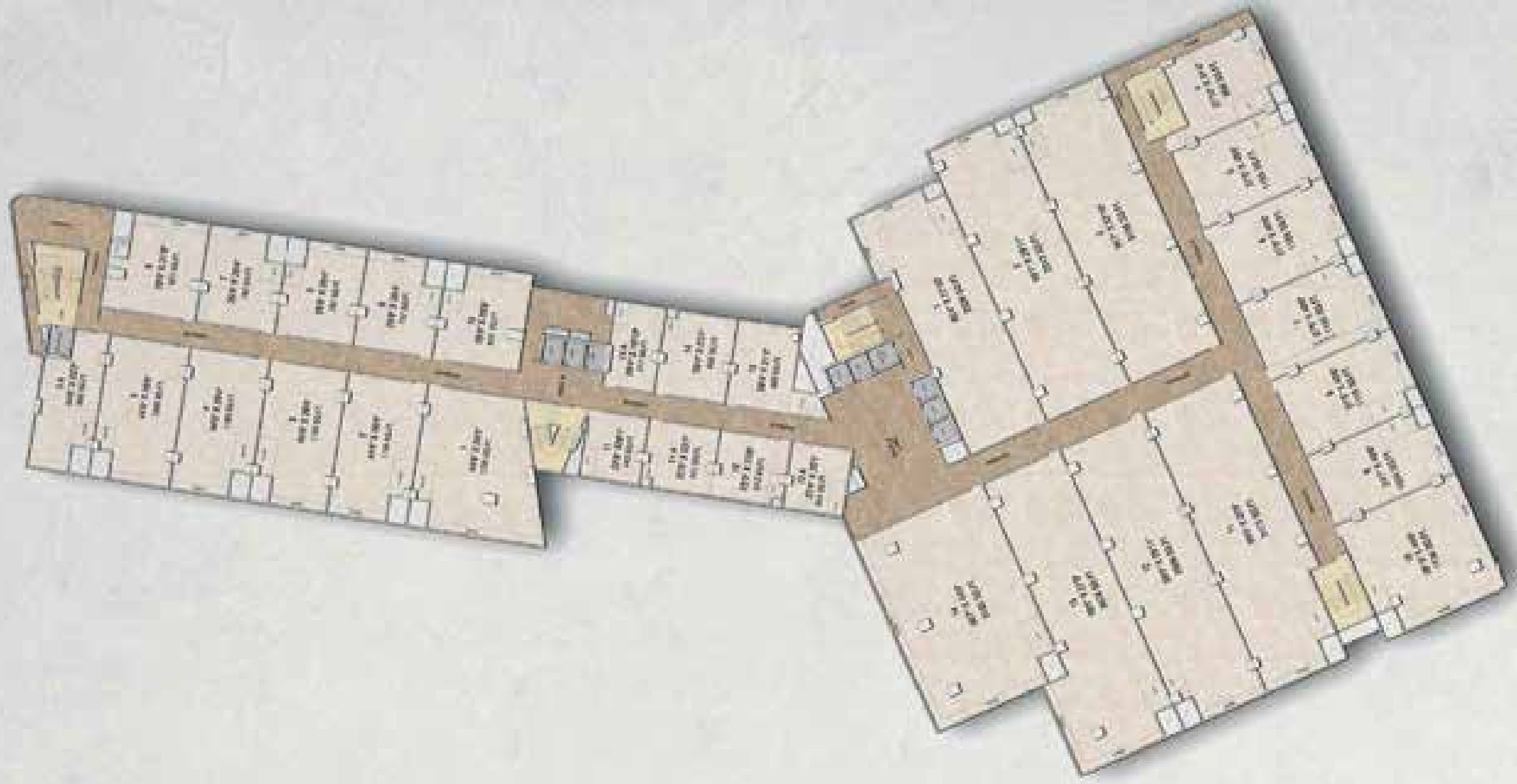
Ground Floor Plan



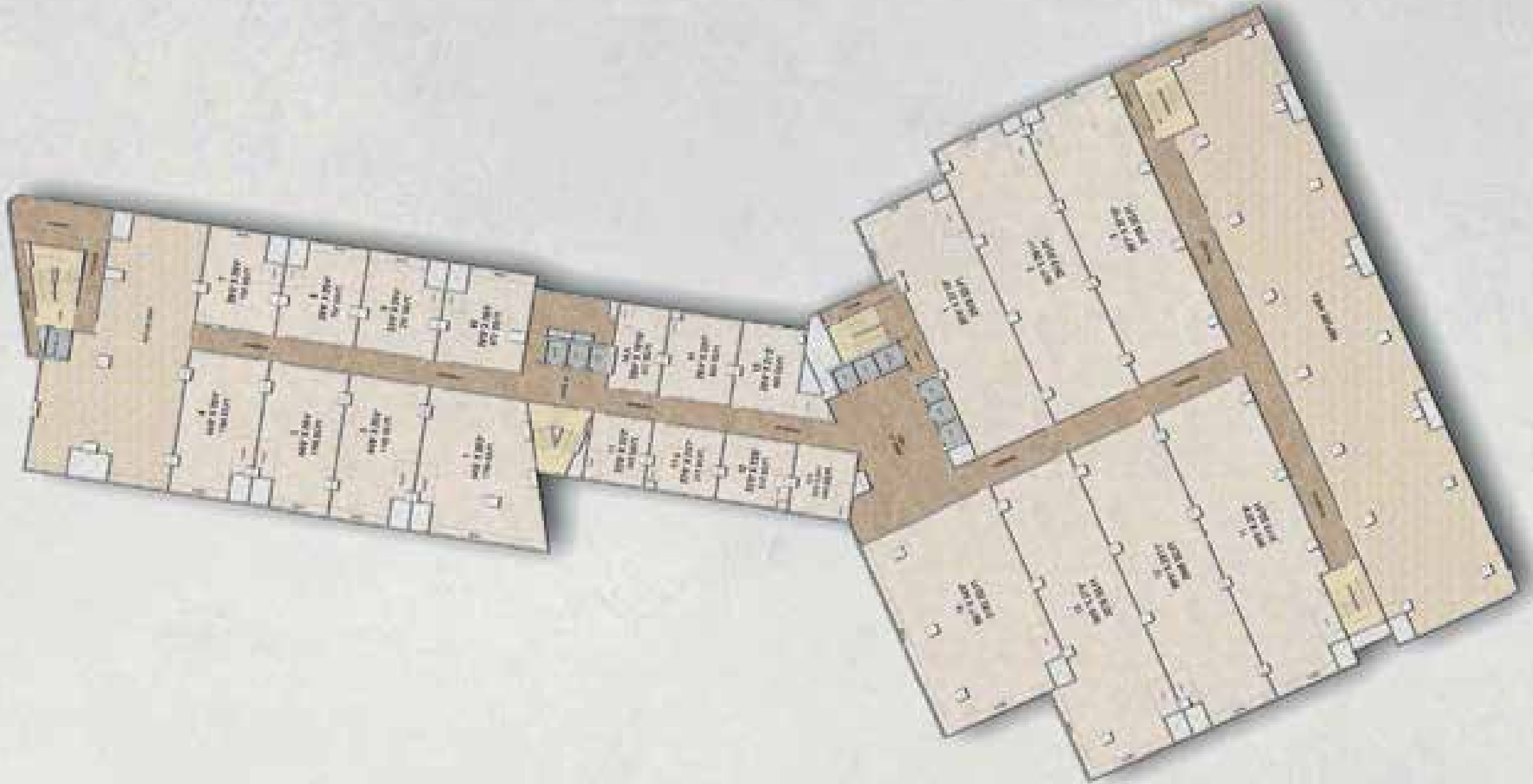
1st Floor Plan



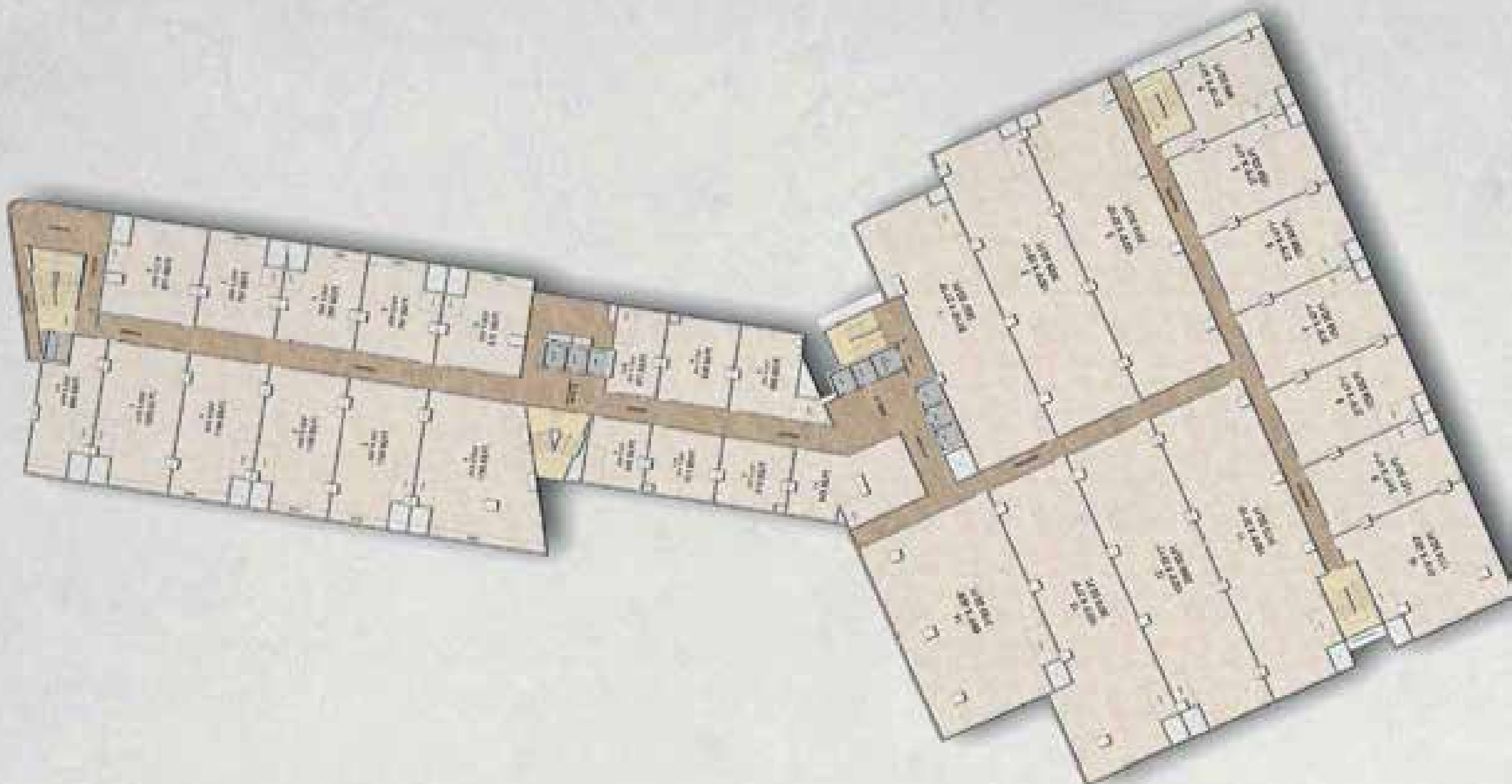
2nd - 5th Typical Floor Plan



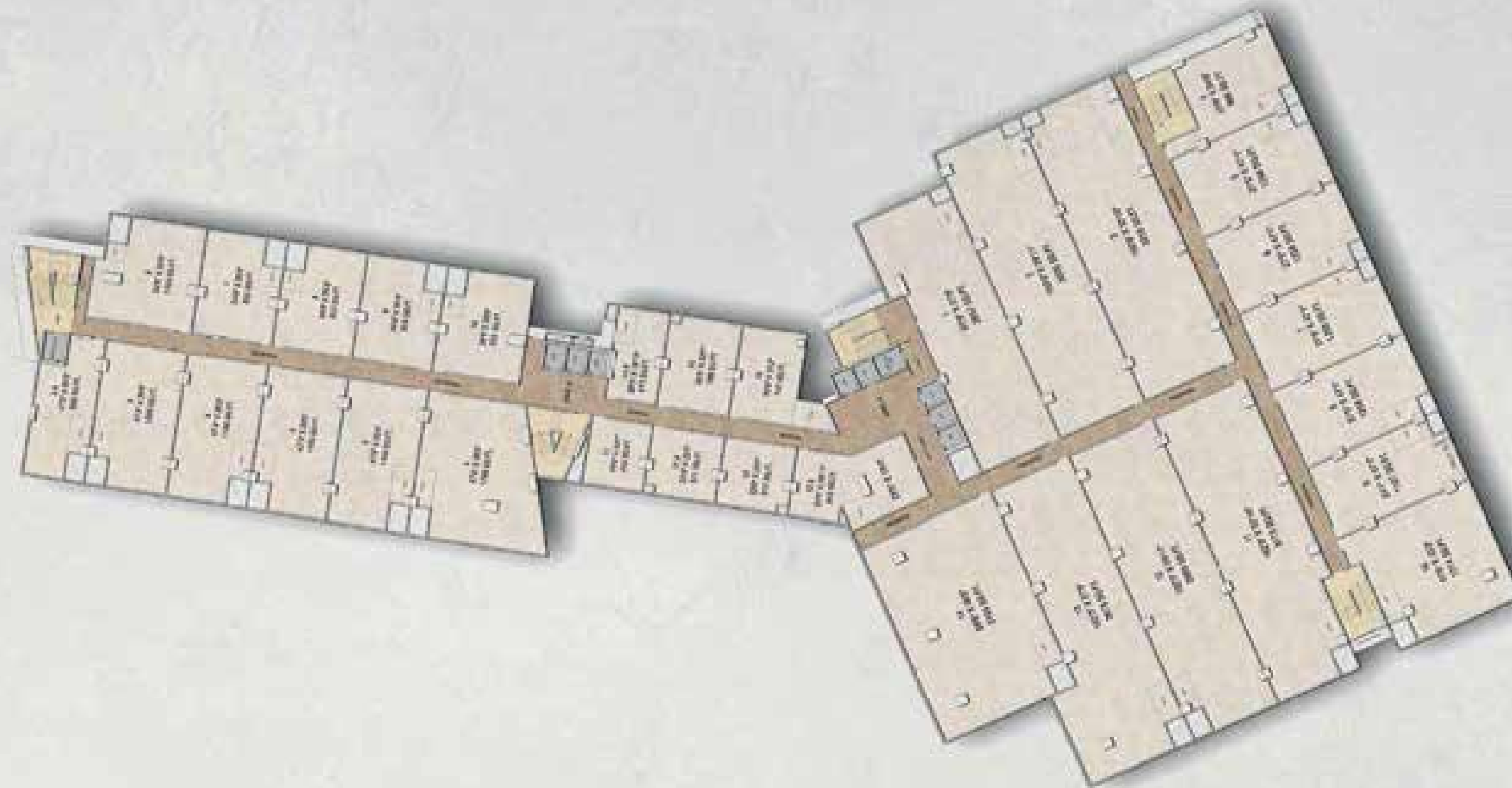
6th Floor Plan



7th Floor Plan



8th - 11th Typical Floor Plan



12th Floor Plan



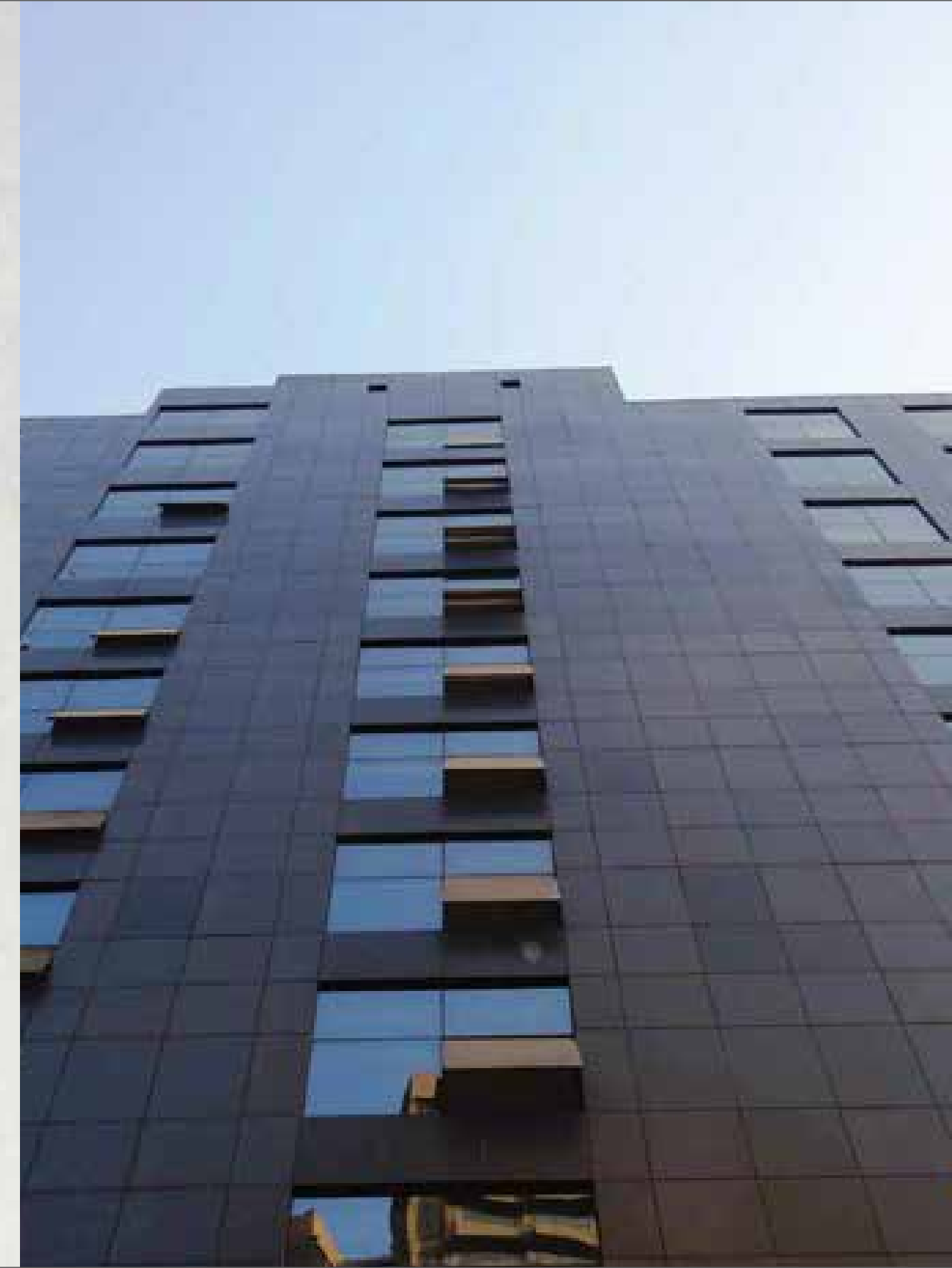
**Changing the commercial
landscape across Mumbai**





KANAKIA 215 ATRIUM

215 Atrium is an aesthetically designed corporate office building of approx. 3,00,000 sq. ft. and also includes a 300 key four star hotel (Courtyard Marriott) within the same complex. It is an ideal destination for corporates to house themselves here due to its strategic location and efficient design systems.



WESTERN EDGE I & II

To give a fresh new treatment to small office spaces, Kanakia Spaces planned 'Western Edge I & II'. This project recognises the energy and drives of today's upcoming corporate world and is designed as a premium state-of-the-art office to nurture and grow those aspirations.

'Western Edge' is the only premium office building of its kind in Borivali (East). Already an established destination with an up-market tenant profile, 'Western Edge' is an integrated hub with premium commercial establishments.





KANAKIA BOOMERANG

INNOVATIVE OFFICE SPACES

'Boomerang', the award winning commercial project from the Kanakia Spaces stable is designed taking into aspect the minuscule details that promise the realization of great business visions. Modelled around the native Australian hunting contrivance, 'Boomerang' is a structure that is built, like its paradigm, to use the energy surrounding to draw its own.

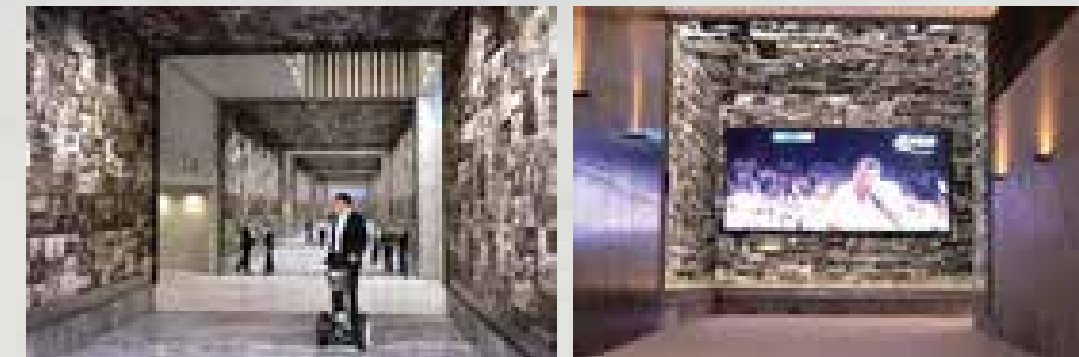


KANAKIA ZILLION

BKC ANNEXE

INDIA'S LARGEST PHOTO GALLERY

'Kanakia Zillion' is a testimony to a company that dreams big. It's an inspiring workplace that's big on space, big on design, big on amenities and more importantly big on grandeur. 'Kanakia Zillion' is a commercial development of about 5 Lakh sq. ft. at BKC Annexe.



A Group that stands for Quality, Integrity and Innovation

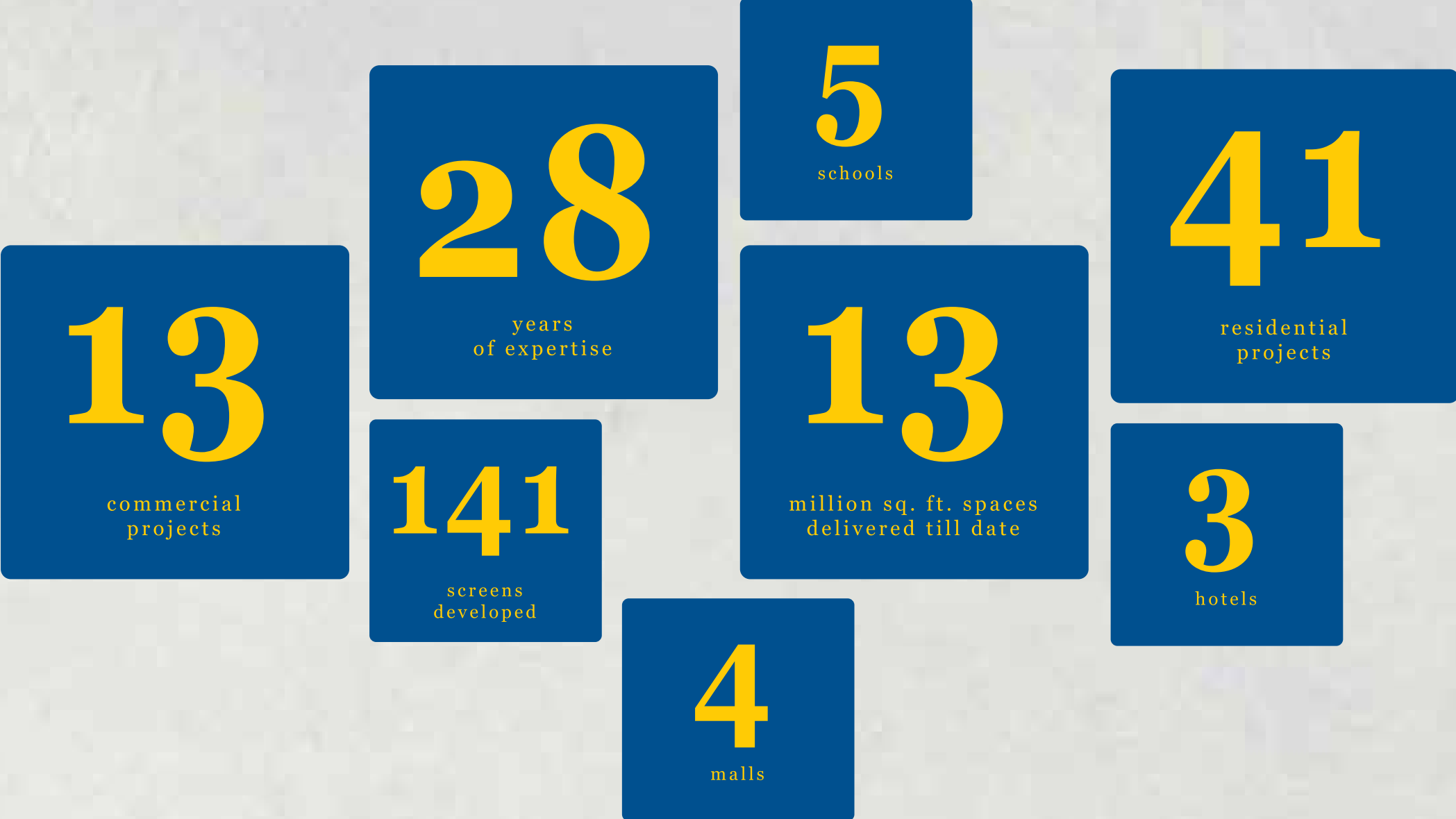


Kanakia Group was formed in the year 1986 by Mr. Rasesh Kanakia (Chairman) & Mr. Himanshu Kanakia (Managing Director). Today Kanakia Group has earned a distinct reputation as one of India's premium developers and is rated as one of the top 10 Real Estate development brands in Mumbai.

Kanakia Spaces Pvt. Ltd. the flagship real estate development company has delivered till date over 13 million sq. ft. of commercial, residential, entertainment, education and industrial spaces.

Kanakia Spaces has been honored with several prestigious awards for their landmark projects.

Our Achievements



Most Promising Real Estate Brand in Mumbai



Kanakia Rainforest, Best Themed Project of the year - West India ESTATE AWARDS 2014 Gurgaon, INDIA



Commercial Project of the Year - West India ESTATE AWARDS 2013 Mumbai, INDIA



India's Best Office Development INTERNATIONAL PROPERTY AWARDS ASIA PACIFIC 2012-13 Kuala Lumpur, Malaysia



Commercial Developer of the Year - West India ESTATE AWARDS 2012 Mumbai, INDIA



Most Innovative Building Design CNBC AWAZ CRISIL - CREDAI Real Estate Awards 2010, Singapore



Realty Plus Commercial Property of the Year 2012, Mumbai, INDIA



Property Awards Commercial Project of the Year UBM PROPERTY AWARDS 2011 Mumbai, INDIA



Realty Excellence Awards Developer of the Year 2011 Mumbai, INDIA



Interior Building Design Awards Best Hospitality Courtyard Marriott Mumbai, INDIA



MCHI Property Awards Excellence In Design Developers (Premium), 2011



Commercial Master Builder of the Year Snowcem Points CSI 2010 Mumbai, India



Accommodation Times Commercial Project of the Year (Boomerang) 2010



MCHI Property Awards Excellence In Design Developers (Section A) October 2010



MOST PROMISING BRAND
 WORLD CONSULTING & RESEARCH CORPORATION
 CONSUMER AND PRODUCT SURVEY BY **ibrands360**
 Process Advisors & Evaluators: Ernst & Young



BEST INNOVATIVE DEVELOPER OF THE YEAR
 West India - ESTATE AWARDS 2014
 Gurgaon, INDIA



Site Address: Kanakia Wall Street, Chakala, Andheri-Kurla Road, Andheri (E), Mumbai - 400 093.

For Sales Enquiry Call: 1800 267 1200

Corporate Office: 215-Atrium, 10th floor, Next to Courtyard by Marriott Hotel, Opp. Divine Child High School, Andheri Kurla Road, Andheri (E), Mumbai 400 093 | Tel.: 022 6726 6666 / 7777 | www.kanakia.com

Disclaimer: The content of this book are about an upcoming commercial project in Andheri (E) thereof and are for your general information and awareness only. The images in this book are for reference purpose only. The Pictures/images captured in this book have been taken from public domains & copyright of these belongs to their respective owners. The information herein i.e. specifications, designs, dimensions, etc. are subject to change without notifications as may be required by the relevant authorities or the assigned architect and cannot form a part of an offer or contract unless specifically covered in the contract. Whilst every care is taken in providing this information, the owner, the developer and managers cannot be held liable for variations. All illustrations and pictures are artist's impressions only. The items are subject to variations, modifications and substitutions as may be recommended by the company's architect and / or relevant approving authorities.

*The property is mortgaged with "L&FS Trust Company Limited" on behalf of Yes Bank Limited. The No Objection Certificate/permission of the mortgage bank/institution would be provided for the sale of flats/units/property, if required *