



KANAKIA
SPACES
DEVELOPMENT

CINELINE
ENTERTAINMENT

RBK
EDUCATIONAL
INSTITUTIONS
EDUCATION

KANAKIA
HOSPITALITY
HOSPITALITY

SITE OFFICE : Atrium 2, Next to 215 Atrium, Behind Courtyard Marriott, Andheri Kurla Road, Andheri (E), Mumbai - 400 093.

CORPORATE OFFICE : Kanakia Spaces Pvt. Ltd., 215 - Atrium, Next to Hotel Courtyard Marriott, Andheri Kurla Road, Andheri (E), Mumbai - 400 093. CELL : 9167940903/9167253398 TEL : 2684 5666 / 6693 7777 FAX : 6726 7744

E-MAIL : sales@kanakia.com WEBSITE : www.kanakia.com

Disclaimer: The information herein i.e. specifications, designs, dimensions etc are subject to change without notifications as may be required by the relevant authorities or the assigned architect and cannot form a part of an offer or contract unless specifically covered in the contract. Whilst every care is taken in providing this information, the owner, the developer and the managers cannot be held liable for variations. All illustrations and pictures are artist's impressions only.



We don't build
structures,
we transform
spaces.

Right now, we're busy transforming Andheri East.

(Just the way we transformed Kandivali East, Mira Road and Thane)

Presenting

ATRIUM ②

BOUTIQUE OFFICE SPACES

Coming up right next to **215 Atrium**, the astounding, **award-winning commercial property, Atrium-II** promises to continue its legacy of grandeur and excellence.

Measuring 1,00,000 sq.ft, it's a contemporary structure (2 basement + ground + 10 floors) constructed with flat-slab technology and extra high ceilings, aluminium composite panels and spider glazing.

Office areas starting from 1200 sq. ft. onwards and floor plates measuring 10,000 sq. ft. Strategically located in Andheri East, Mumbai's commercial hub, it's within the same development area of the opulent, Courtyard Marriott Hotel.

Atrium II offers world-class facilities, besides being the address many large and medium-sized business houses are waiting for; especially for those who missed out on **215 Atrium**.





A location that's unbeatable

One of the biggest advantages of moving up to Atrium-II is its strategic location. After all, it's situated on Andheri-Kurla Road in Andheri East. Which means it's easily accessible from Andheri Railway Station (1.3 km), The Western Express Highway (0.9 km), the Domestic (3.5 km) and International Airports (2 km). Not to mention, the upcoming Mumbai Metro Rail (0.1 km).



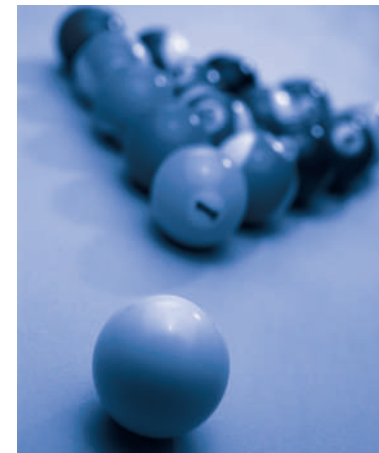
A grand hotel and greenery all around

Atrium-II has a 300-key hotel right next door in the same compound. A two time award-winning business hotel called Courtyard Marriott. So the next time business associates from out of town come over, you can be rest assured that they can be put up in the lap of luxury just a few steps away.



Truly world-class facilities

Taking a break takes on a new meaning at Atrium-II. It's not just coffee or carom over here. It's a full-fledged state-of-the-art clubhouse in the same complex offering a host of recreational activities that include everything from indoor games, Table Tennis to a well-equipped gymnasium. And, of course, a swanky cafeteria in the same complex at 215 Atrium. Nothing like an atmosphere to charge you up before getting back to work.

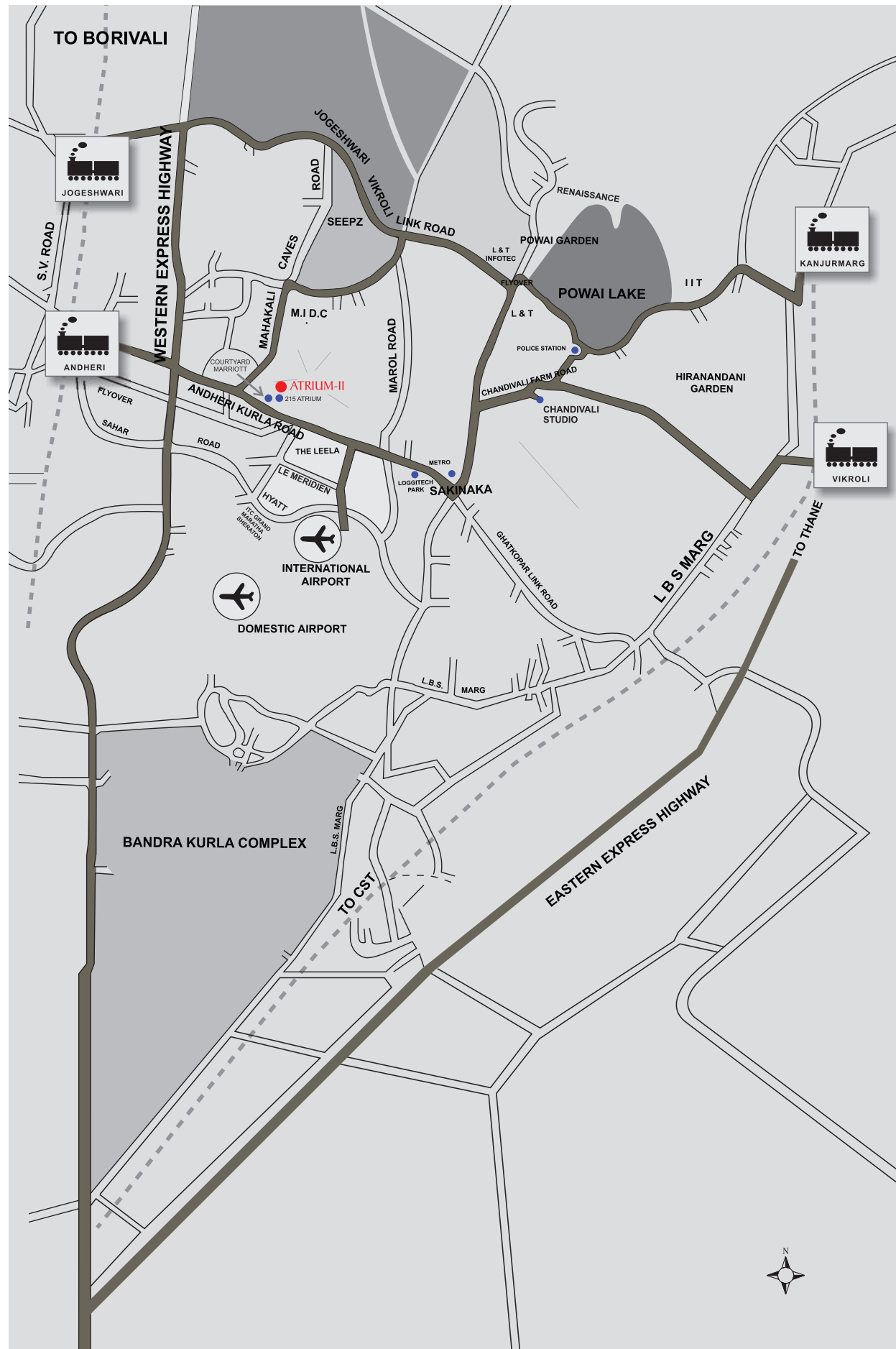


Ample car parking

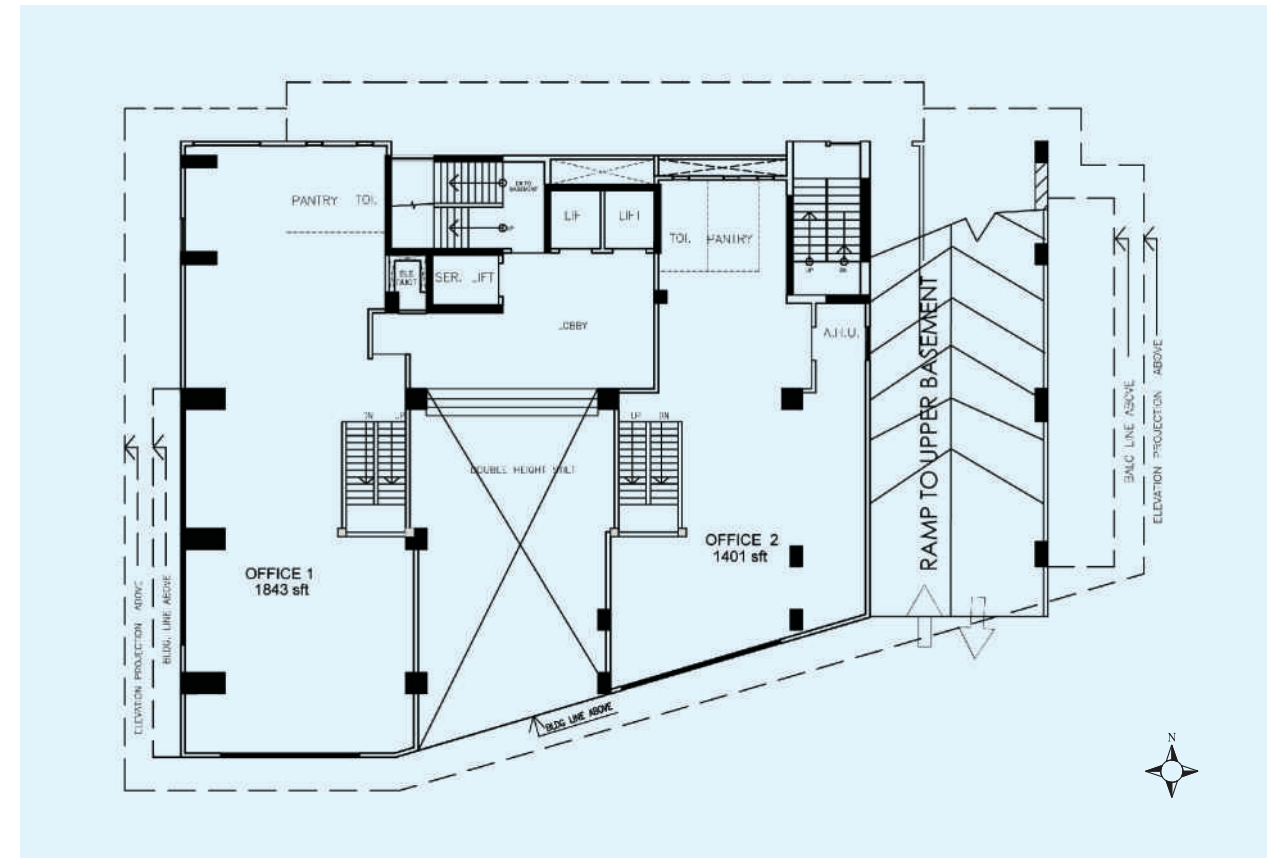
When you have a business address that matches global standards, ample car parking goes without saying. As for other amenities, here's taking a brief look at them: When you have a business address that matches global standards, ample car parking goes without saying. As for other amenities, we have a host of them that exceed your expectations.



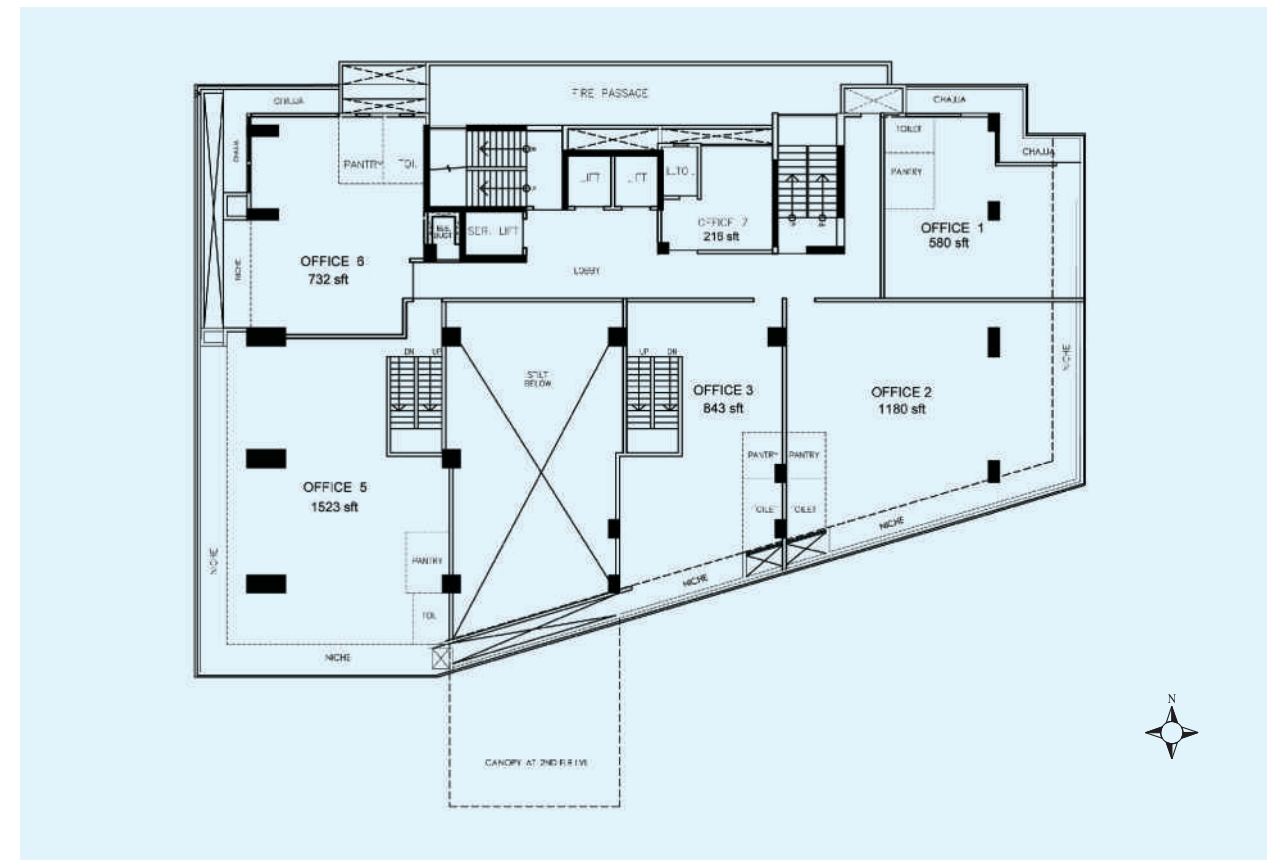
Location Map



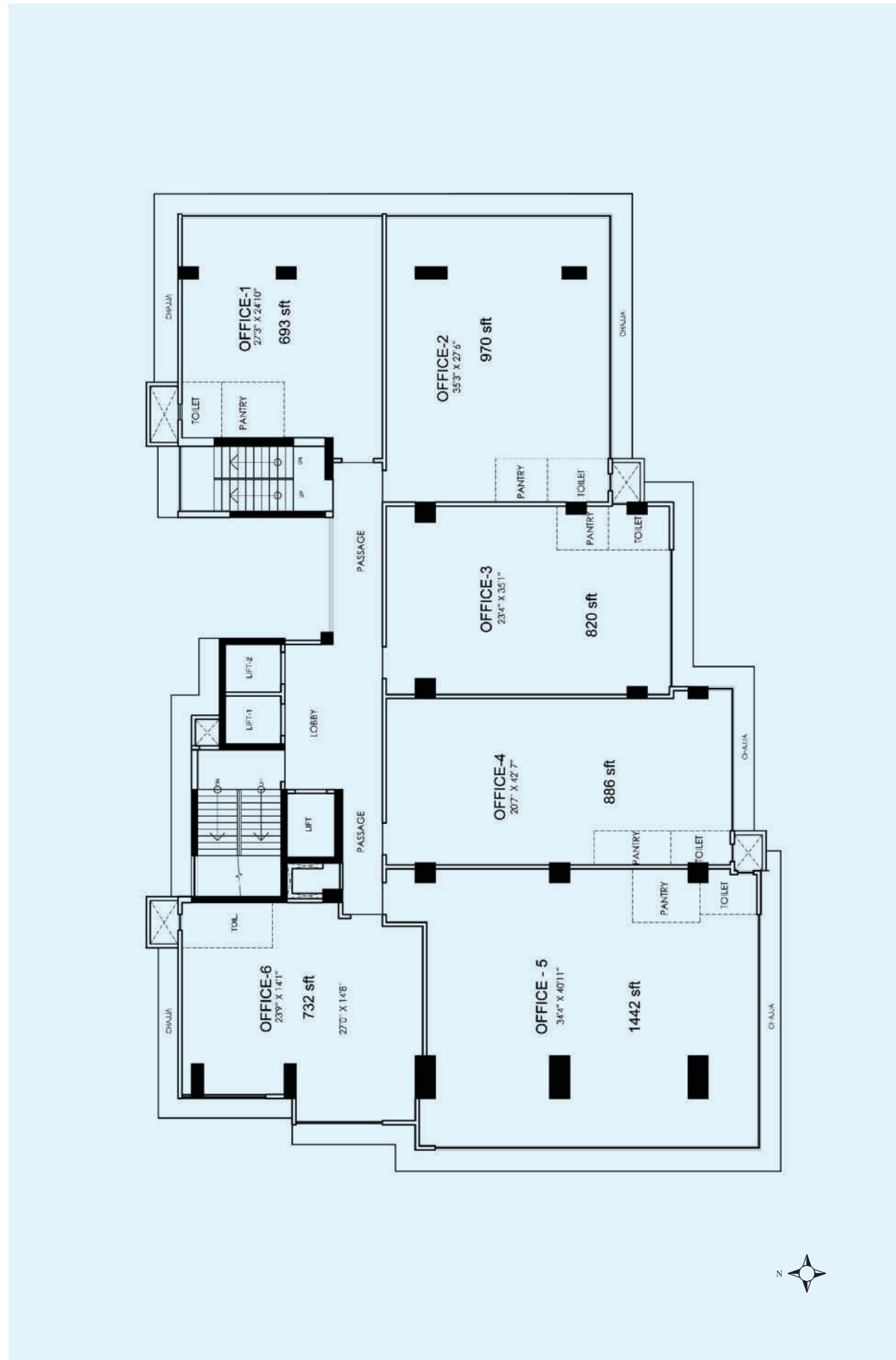
Ground Floor Plan



1st Floor Plan



4th, 5th & 7th to 10th Floor Plan



Re-introducing the creators

215 Atrium and Atrium-2 are brought to you by **Kanakia's**, the realty people who have been at the forefront of residential and commercial developments, quality entertainment, in Mumbai since the past 25 years. Having already developed over 12 million sq. ft. of exceptional living & working spaces, another 6 million sq. ft. is currently under development.

The projects from **Kanakia's** are well known for striking the right balance between strategic locations, spacious developments, state-of-the-art architecture and financial considerations.

