



**Piramal**  
Realty



**15,000**  
Employees globally

Revenues of over  
from outside India **51%**

Operations In  
Countries **30**

Piramal Foundation has impacted over  
**90mn** people in **21** states

# Our Values

## Knowledge

**Expertise  
Innovation**

We strive for a deeper understanding of our domain.

We aspire to do things creatively.

## Action

**Entrepreneurship  
Integrity**

We are empowered to act decisively and create value.

We are consistent in our thought, speech and action.

## Care

**Trusteeship  
Humility**

We protect and enhance the interests of our customers, community, employees, partners and shareholders.

We aspire to be the best, yet strive to be humble.

## Impact

**Performance  
Resilience**

We strive to achieve market leadership in scale and profitability, wherever we compete.

We aspire to build businesses that anticipate, adapt and endure for generations.

A child with blonde hair is holding a green paper cutout of a house. The cutout has a gabled roof and two square windows. The child's hands are visible at the bottom corners of the cutout. The background is a blurred green outdoor setting.

Our Purpose

Doing Well  
& Doing Good




**Piramal**  
Realty

# About Piramal Realty

Founded  
**2012** 

Team  
**300+** 

Development  
**20MN**  
Sq.Ft. 

Association with  
**Global experts** 

**Mumbai**  
Focused  
Strategy 

Up to  
**80%**   
Residential  
Development

Up to  
**20%**   
Commercial  
Development

Received  
**\$434MN**   
India's Largest Private  
Equity Investment  
Since 2008



## Anand Piramal

### Founder, Piramal Realty

---

Anand Piramal is the Executive Director of Piramal Group and Founder of Piramal Realty Pvt. Ltd. He has a proven and strong track record of independently establishing and building valued businesses.

Under the guidance and leadership of Anand, the real estate arm of Piramal Enterprises, Piramal Realty was established in 2012. He has played a pivotal role in the acquisition of prime land parcels across Mumbai, the building of a great team and the designing of world class buildings. Anand led and aided the raising of capital from Goldman Sachs and Warburg Pincus, two of the world's most respected investors, to the tune of USD 434 million.

In 2018, Anand was conferred with the **Hurun Real Estate Unicorn of the Year 2017** by Hurun India for his pivotal role in steering the company to growth and success.

Anand majored in Economics from the University of Pennsylvania, and Business Administration from the prestigious Harvard Business School. He is also the youngest President of the Youth Wing of the 100-year-old Indian Merchant Chambers.

## Board of Advisors



**Ajay Piramal**

Chairman  
Piramal Group



**Nitin Nohria**

Dean  
Harvard Business  
School



**Robert Booth**

Former CEO  
Emaar Properties  
PJSC



# Current Projects



Piramal  
revanta



Piramal  
aranya



Piramal  
vaikunth



AGASTYA  
CORPORATE PARK

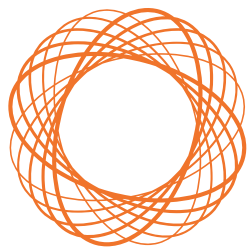


PIRAMAL  
MAHALAXMI  
SOUTH MUMBAI





AGASTYA  
CORPORATE PARK



**AGASTYA**  
CORPORATE PARK



**RERA Registration no:**  
Building A: P51900003903  
Building B: P51900002300

#### LOCATION

Kurla, Mumbai

#### PLOT SIZE

16.25 acres

#### PH 1 DEVELOPMENT

8.8 acres with a carpet area of over 5 lakh sft

#### DESCRIPTION

State-of-the-art, aesthetic commercial property with 50,000 sft of landscaped greenery, that looks to redefine the urban landscape in the fast growing business district of Kurla

**CALLISONRTKL™**  
A DESIGN CONSULTANCY OF ARCADIS

LEAD ARCHITECT

**BUROHAPPOLD**  
ENGINEERING

STRUCTURAL & MEP  
CONSULTANTS

**priedemann**  
facade experts  
FAÇADE CONSULTANTS

**SSA** SANDEEP SHIKRE AND ASSOCIATES  
ARCHITECTS

ASSOCIATE ARCHITECTS

**B** **LERCH BATES**  
Building Insight

TRANSPORTATION  
EXPERTISE

**BELT COLLINS**  
LANDSCAPE CONSULTANT

**L7** **LARSEN & TOUBRO**  
It's all about Imagineering

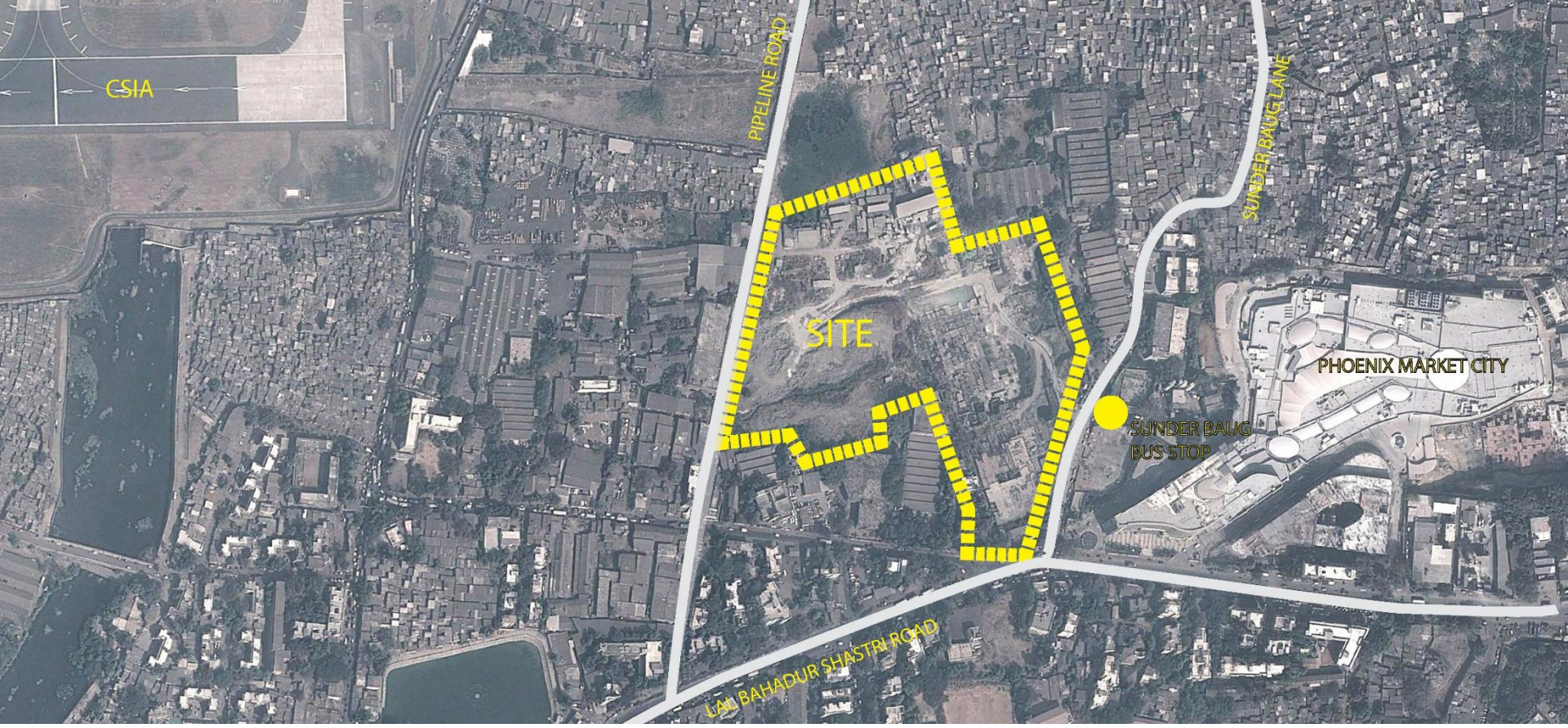
CONSTRUCTION PARTNER

**Turner**

CONSTRUCTION  
MANAGEMENT

**ARUP**  
ACOUSTIC CONSULTING

# SITE LOCATION



# SITE PLAN



# CONNECTIVITY ADVANTAGE



**ACTUAL FACADE PICTURE**





Piramal ←  
ANITI - WING A  
ANANTA - WING B  
WING C  
↑  
BASEMENT  
SERVICE YARD  
ARRIVAL PLAZA

**DROP OFF POINT**





**OPERATIONAL OFFICE**



**OPERATIONAL OFFICE**



**OPERATIONAL OFFICE**

# FEATURES & AMENITIES



Biophilic design



Integrated Building Management Systems



Multi-format office spaces



Multiple levels of Parking Space



Microprocessor elevator controls



Centralised Air - Conditioning



Conference rooms



Cafeteria



Gymnasium



ATM



Professional FM Services



Rain Water Harvesting & STP



Attached corporate terraces

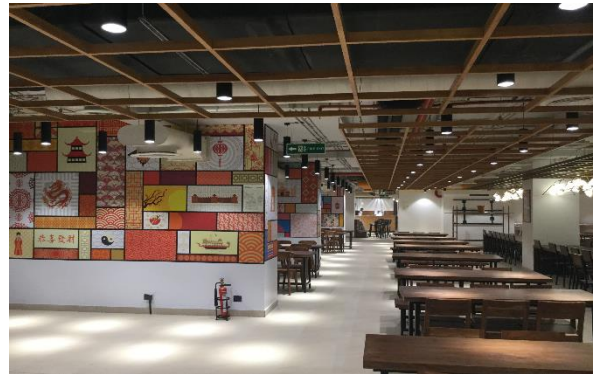
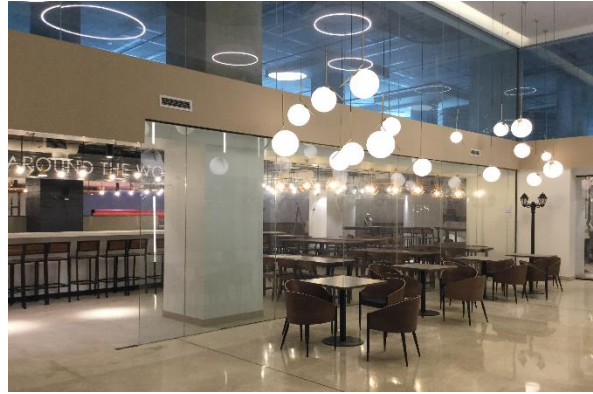


1 Acre+ Open Green Space



Day care centre (Crèche)

# STATE OF THE ART FOOD COURT



# LANDSCAPE GARDEN



**THANK YOU**